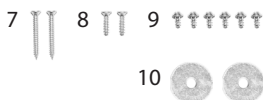
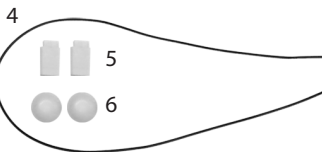


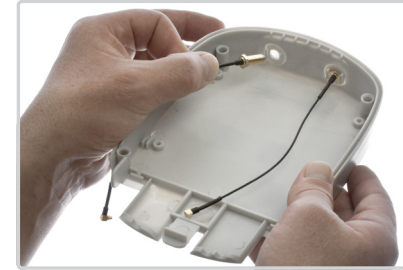
Package Contains:

1. Body
2. Top Cover
3. Bottom Cover
4. Seal
5. Light Guides
6. Plastic Caps
7. Screws 2.9×25mm (2×)
8. Screws 2.9×12mm (2×)
9. Screws 2.9×6.5mm (6×)
10. Washers (2×)

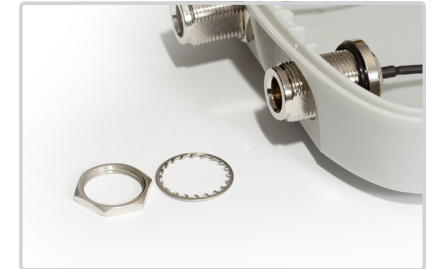


1 Installation of Pigtails

A Install the SMA pigtails using special washer, nut and o-ring.



B When installing N-connectors, expand the openings using cutter.



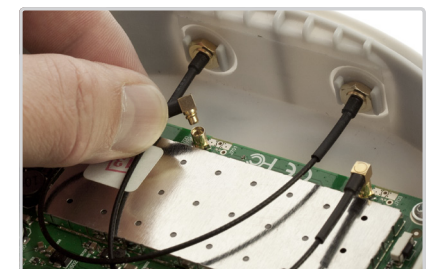
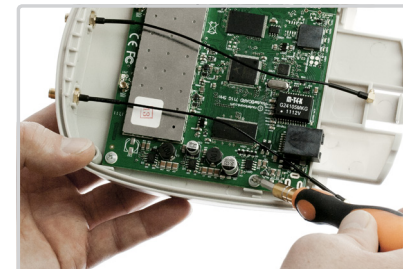
C Use Plastic Caps to cover the top openings when not used for pigtail installation. Secure Caps with 2.9×6.5mm (the smallest) screws and washers.



2 Installation of RouterBoard

A Install the RouterBoard using 2.9×6.5mm (the smallest) screws.

B Connect the pigtails to the RouterBoard.



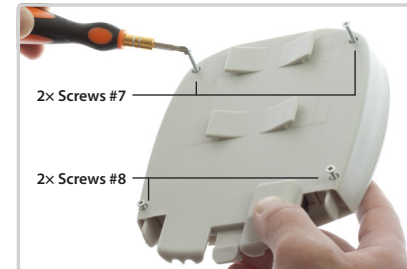
3 Installation of the Seal and Light Guides

- A Install the Silicone Seal in StationBox's Body.
- B According to the specific RouterBoard setup, install the Light Guides to support readability of RouterBoard LEDs.



4 Install the Top Cover

Install the Top Cover using screws 2.9×25mm and screws 2.9×12mm. Mind the correct positioning of the Screws as shown on picture! Cut or chip away premolded parts of the front panel, if interfering with RouterBoard's connectors.



5 How to Mount, Remove and Protect the StationBox® S

You can easily snap StationBox® S to compatible Antenna. Please refer to our webpage www.rfelements.com to check updated list of compatible antennas.

To remove StationBox® S from the mount, use tool to release the mount's lock. Any firm object that fits the gap could be used: screwdriver, wrench, knife etc.



RF elements Accessories

For installation on the Wall or Pole, use RF elements EasyBracket™ S, bracket compatible with StationBox® S and StationBox® Mikro.

